



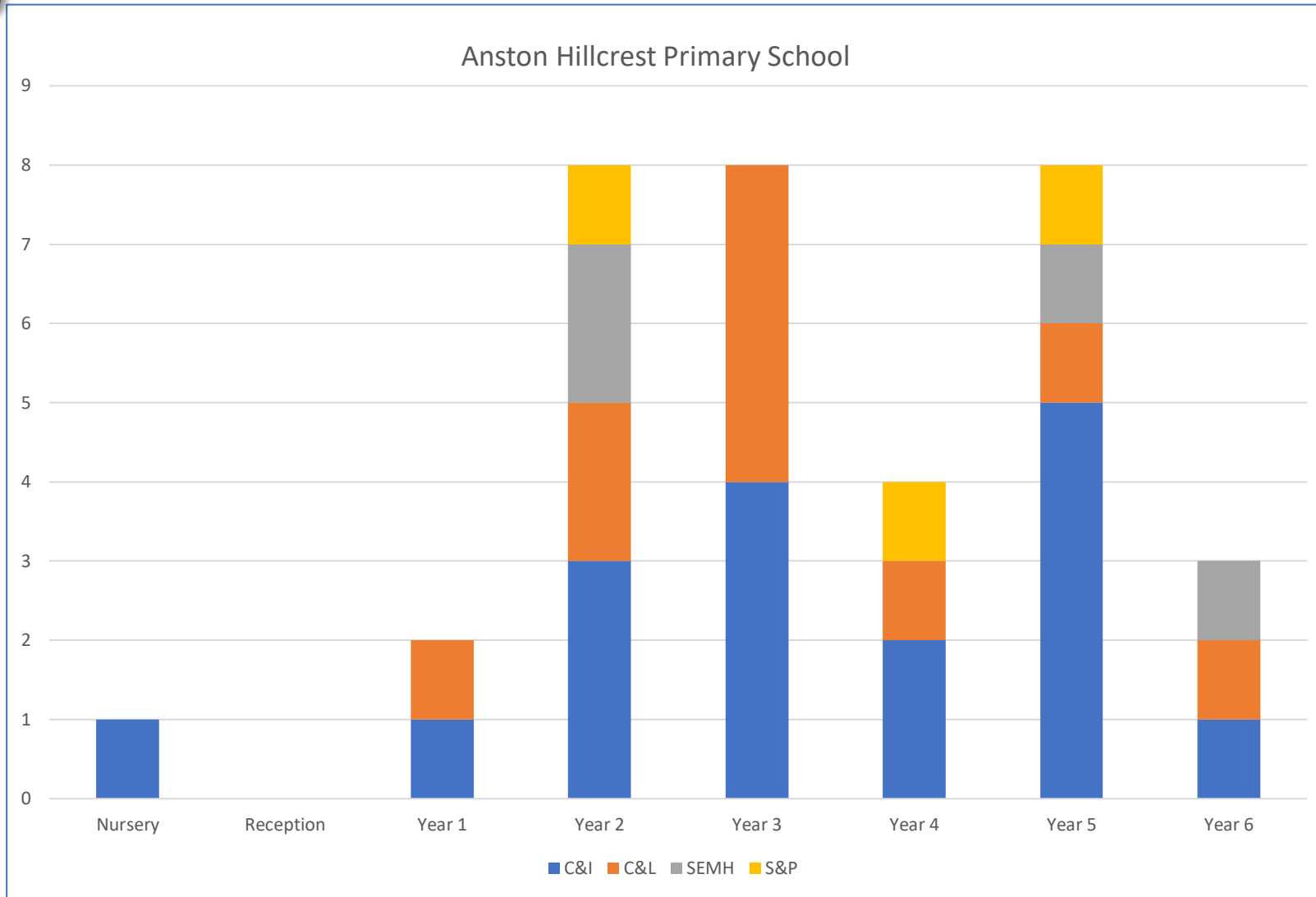
SEND Provision at Anston Hillcrest Primary School



@AHP We promote 5 key values: Respect, Kindness, Resilience, Aspiration and Teamwork and these underpin all we do.



- School Staff Expertise**
- SENDCo
 - Speech and Language Integrated Resource
 - The Smallest Things Prem aware school
 - HLTAs
 - Trust Sports Coach
 - Playground leaders
 - Staff skilled in the delivery of speech and language programmes
 - Staff skilled in supporting autism and neurodiverse conditions
 - Team Teach trained workforce
 - Trauma informed practice throughout school
 - No outsiders school
 - Respect rangers
 - School council



Anston Hillcrest Primary School has 14% of pupils with SEND (compared to 13% national average) and Pupil Premium at 12% (compared to 23% nationally). We have 15 pupils with EHCPs in school, including the pupils who are currently attending our Speech and Language Resource. Our attendance is 94.44%. The school's catchment is socio-economically diverse with deprivation indicators for Health, Crime and Employment all in the lowest 50% nationally.

'Make a difference'

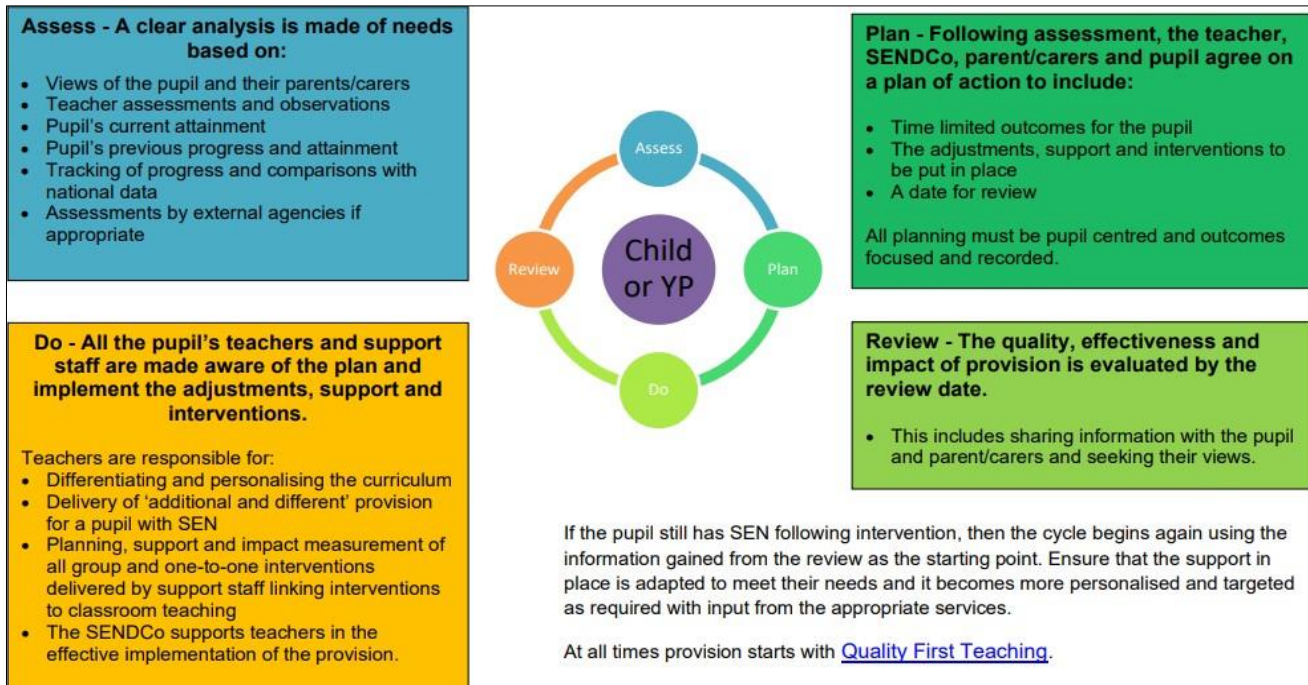
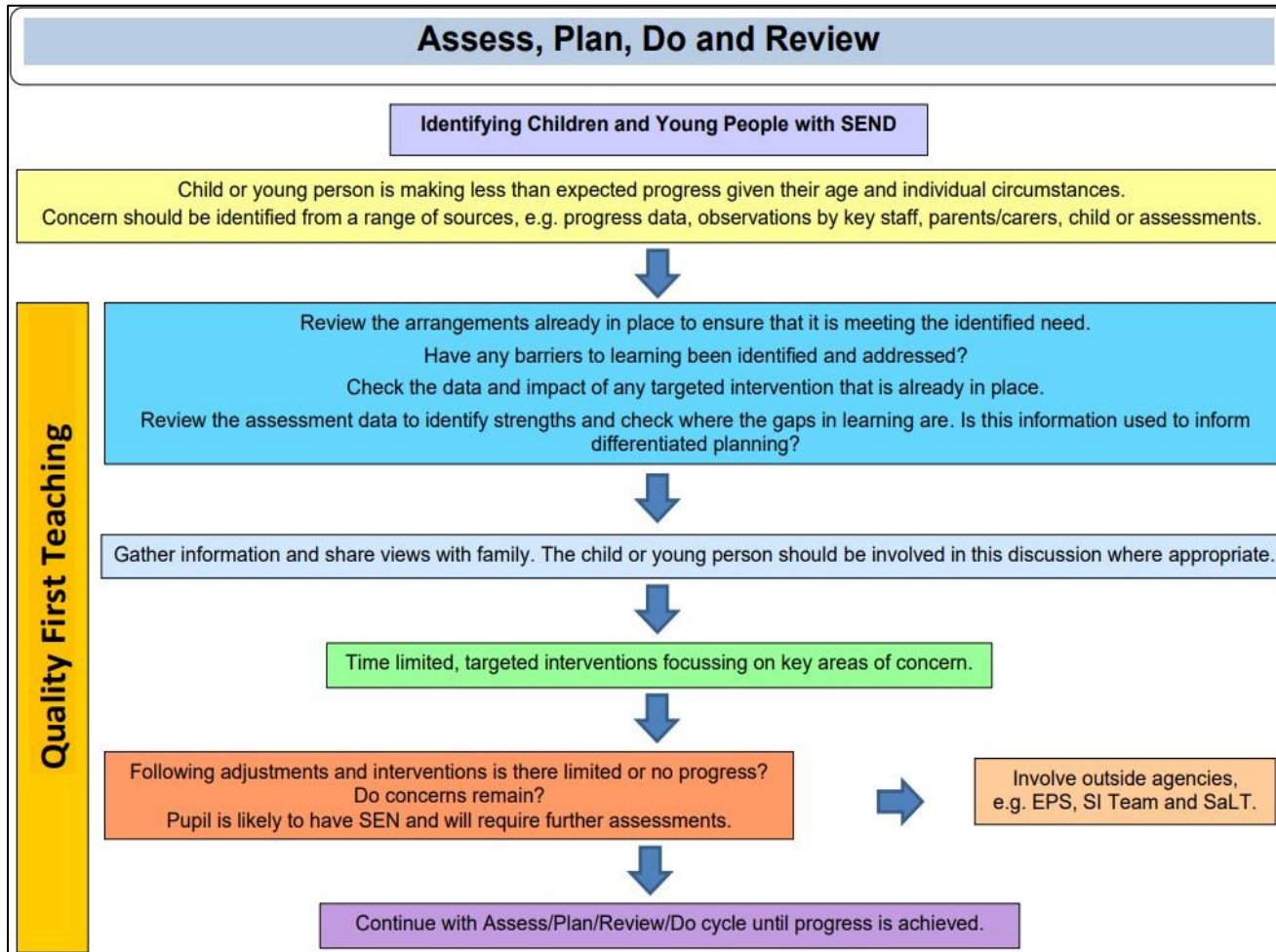
Our Integrated Resource for Speech and Language provides bespoke educational provision for pupils who have an Education and Health Care Plan and have been identified through the Local Authority S&L graduated response pathway.

Our resource is for pupils who have communication and interaction as their primary learning need; intensive speech therapy targets form the basis of their learning running alongside the National Curriculum offer.

Working within our resource are NHS speech therapists as well a full-time class teacher and experienced support staff.

Anston Hillcrest Primary School is child-centred, inclusive, and distinctive. We deliver excellence in education and build aspiration for all. Together we:

- Work together as a community to provide a happy and safe learning environment where everyone is shown respect.
 - Value the Mental Health and Well Being of all
 - Create an inclusive culture, with an ambition of success for all.
- Provide a stimulating knowledge-based curriculum, enabling children to meet the challenges of an ever-changing, diverse world and Make a Difference.



Implementation: School Steps to Success

Provision	Communication and Interaction	Cognition and Learning	Social, Emotional and Mental Health	Sensory and Physical
Universal	<ul style="list-style-type: none"> • Quality First Teaching • Meeting with parents • One Page Profile • Communication in Print • Clicker • Interventions • Zones of Regulation • Visual aids 	<ul style="list-style-type: none"> • Quality First Teaching • Meeting with parents • One Page Profile • Communication in Print • Clicker • Interventions and small group work • Zones of Regulation 	<ul style="list-style-type: none"> • Quality First Teaching • Meeting with parents • One Page Profile • Communication in Print • Clicker • Interventions • Zones of Regulation • Check ins with key staff • Emotion coaching 	<ul style="list-style-type: none"> • Quality First Teaching • Meeting with parents • One Page Profile • Communication in Print • Clicker • Sensory circuits • Zones of Regulation • Sensory breaks
Targeted	<ul style="list-style-type: none"> • As above and also: • SEN support plan • Regular SEN meetings with parents • SALT programmes • Teacher-devised specific interventions. • Specific support for language and communication difficulties • Early Help if applicable 	<ul style="list-style-type: none"> • As above and also: • SEN support plan • Regular SEN meetings with parents • Teacher-devised specific interventions • Published support programmes • Early Help if applicable 	<ul style="list-style-type: none"> • As above and also: • SEN support plan • Regular SEN meetings with parents • Teacher-devised specific interventions • Published support programmes (e.g. Lego therapy, Anger Gremlins, Emotional Scales) • Early Help if applicable 	<ul style="list-style-type: none"> • As above and also: • SEN support plan • Regular SEN meetings with parents • Teacher-devised specific interventions • OT devised programmes • Early Help if applicable
Specialist	<ul style="list-style-type: none"> • As above and also: • Fusion Learning Support Service • Autism SALT support • EPS 	<ul style="list-style-type: none"> • As above and also: • Fusion Learning Support Service • EPS 	<ul style="list-style-type: none"> • As above and also: • Behaviour Support e.g. Aspire Outreach • EPS • Bereavement support 	<ul style="list-style-type: none"> • As above and also: • Occupational Therapy • Hearing and Visual Impairment Team

As a result, children at Anston Hillcrest:

- feel happy, safe and respected
- behave well and diversity is celebrated
- demonstrate high levels of engagement in activities, developing their speaking, listening and social skills
- have access to supportive and trained staff who ensure tasks are appropriate for the child's individual needs
- make good progress through their educational journey due to Quality First Teaching, the use of resources and bespoke small group interventions
- develop good independence and life skills
- make secure transitions between classes and educational providers

SEND CPD for staff at Anston Hillcrest:

- Team Teach
- Bonding through play
- Regulate, restore and repair
- De-escalation
- Relational practice
- Emotion coaching
- Positive behaviour management
- OT – sensory

